

14ESCAPE



Go Further



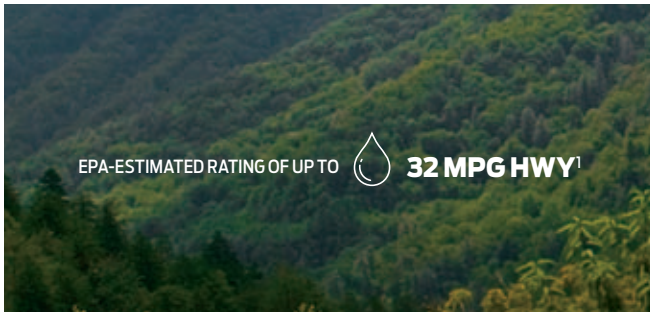
Sips fuel¹ **AND** gushes technology.

Titanium. Ruby Red Metallic Tinted Clearcoat. Available equipment.

¹EPA-estimated rating: 23 city/32 hwy/26 combined mpg, 1.6L EcoBoost[®] FWD. Actual mileage will vary.



We put more into it. So you get more out.



Case in point: our state-of-the-art, turbocharged, direct-injection 1.6L EcoBoost[®] I-4 engine.² It uses twin independent variable camshaft timing (Ti-VCT) to emphasize fuel efficiency or power output as your input demands. For cruising, the 1.6L has an EPA-estimated rating of 32 mpg hwy.¹ For lively acceleration and passing performance, it offers 178 hp³ and 184 lb.-ft.³ of torque. Seeking more power? The 2.0L EcoBoost I-4 engine² uses the same technologies to produce a spirited 240 hp³ and 270 lb.-ft.³ of torque, with 90% of its peak torque available from 1,750 to 4,500 rpm. It has an EPA-estimated rating of 30 mpg hwy.¹

To make itself even more aerodynamic and fuel efficient, Escape can also adjust its class-exclusive active grille shutters.⁴ Every engine, including the standard 168-hp 2.5L Duratec[®] I-4, is mated to our 6-speed SelectShift[®] automatic transmission. Shift for yourself, or leave it to Escape. *Motor Trend* sums it all up perfectly: Escape “proves you can get style, function, and fun in one well-priced package.”⁵

¹EPA-estimated ratings: 23 city/32 hwy/26 combined mpg, 1.6L EcoBoost, FWD, actual mileage will vary; 22 city/30 hwy/25 combined mpg, 2.0L EcoBoost, FWD, actual mileage will vary. ²Available feature. ³Figures achieved using 93-octane premium unleaded fuel. ⁴Class is Small Utilities vs. 2013/2014 competitors. Standard on 1.6L and 2.5L engines. ⁵September 2012 issue.



Your kick is its command.

To open the class-exclusive, hands-free liftgate,¹ simply kick your foot under the rear bumper with your Intelligent Access¹ key fob tucked away in a pocket or purse. Sensors detect your leg, the motion and the proximity of the fob, triggering the liftgate to open. The same action triggers it to close. You can even program its fully opened height to the position that works best for you. Loading cargo into your SUV has never been easier.

Titanium. Sunset Metallic. Available equipment.

¹Available feature.



Its space matches your pace.


This Escape offers more cargo room than the previous generation – 67.8 cu. ft. with the rear seat folded. You can amplify its spacious feeling with a power panoramic Vista Roof.¹ Create a flat load surface by folding both sides of the 60/40 split rear seat and placing the adjustable cargo load floor² in its highest position. Keep small items close at hand in the storage tray next to each front seat. And stow others discreetly in the rear-seat underfloor compartment or in the center console up front. You're always ready for adventure in Escape.


¹Available feature. ²Available with 17" wheels only.



It offers you an oasis of calm.

Escape your busy day within its smartly designed interior, where spaciousness and clean lines soothe the senses. Cloth- or leather-trimmed¹ seating comfortably supports while also featuring environmentally friendly, soy-based foam in the seat cushions and seat backs to help conserve limited resources and reduce CO₂ emissions. This Escape also offers more hip room and more rear leg room than the previous generation. Escape is more than a name – it's a lifestyle.

HEATED  FRONT SEATS¹

 AUDIO SYSTEM FROM SONY^{®1}

PUSH-BUTTON  START¹

*Titanium. Charcoal Black leather trim.
Available equipment.*

¹Available feature.

Respects nature in unexpected ways.

Building upon its remarkable fuel efficiency, Escape puts several materials that are all too often destined for landfills to surprisingly practical reuse. Recycled 20-oz. plastic bottles go into its carpeting, which is a resilient blend of post-consumer and post-industrial polyester fibers. Scrap cotton from jeans, sweaters, T-shirts and the like is turned into sound-absorption material that helps keep Escape quiet inside. To top it off, the vehicle itself is over 85% recyclable after it's driven its last mile – now that's forward thinking.



RECYCLED PLASTIC  *in its carpet*

COTTON FIBERS  *absorb sound*

over 85%  RECYCLABLE

*SE. Ruby Red Metallic Tinted Clearcoat.
Titanium. Ingot Silver Metallic.
Available equipment.*



Listens when you speak.

Voice-activated Ford SYNC^{®1} with 911 Assist[®] delivers hands-free calls, Bluetooth[®]-streaming music and more with simple voice commands. Once paired, it can download your contacts and play music from your phone, MP3, USB or iPod.[®] Just touch a button on the steering wheel and say things like "Call: Jake Smith," or "Play playlist: Beautiful day." SYNC AppLink^{™2} lets you control Pandora,[®] iHeartAuto,[™] MLB.com At Bat[®] and select other apps by voice too. SYNC. Say the word.

SYNC
POWERED BY **Microsoft**

*Titanium. Charcoal Black leather trim.
SYNC with MyFord Touch. Available equipment.*

¹Available feature. Driving while distracted can result in loss of vehicle control. Only use mobile phones and other devices, even with voice commands, when it is safe to do so. Not all features are compatible with all phones. ²SYNC AppLink is available on select models and compatible with select smartphone platforms. SYNC AppLink is not compatible with MyFord Touch[®] Commands may vary by phone and AppLink software.

14ESCAPE
ford.com



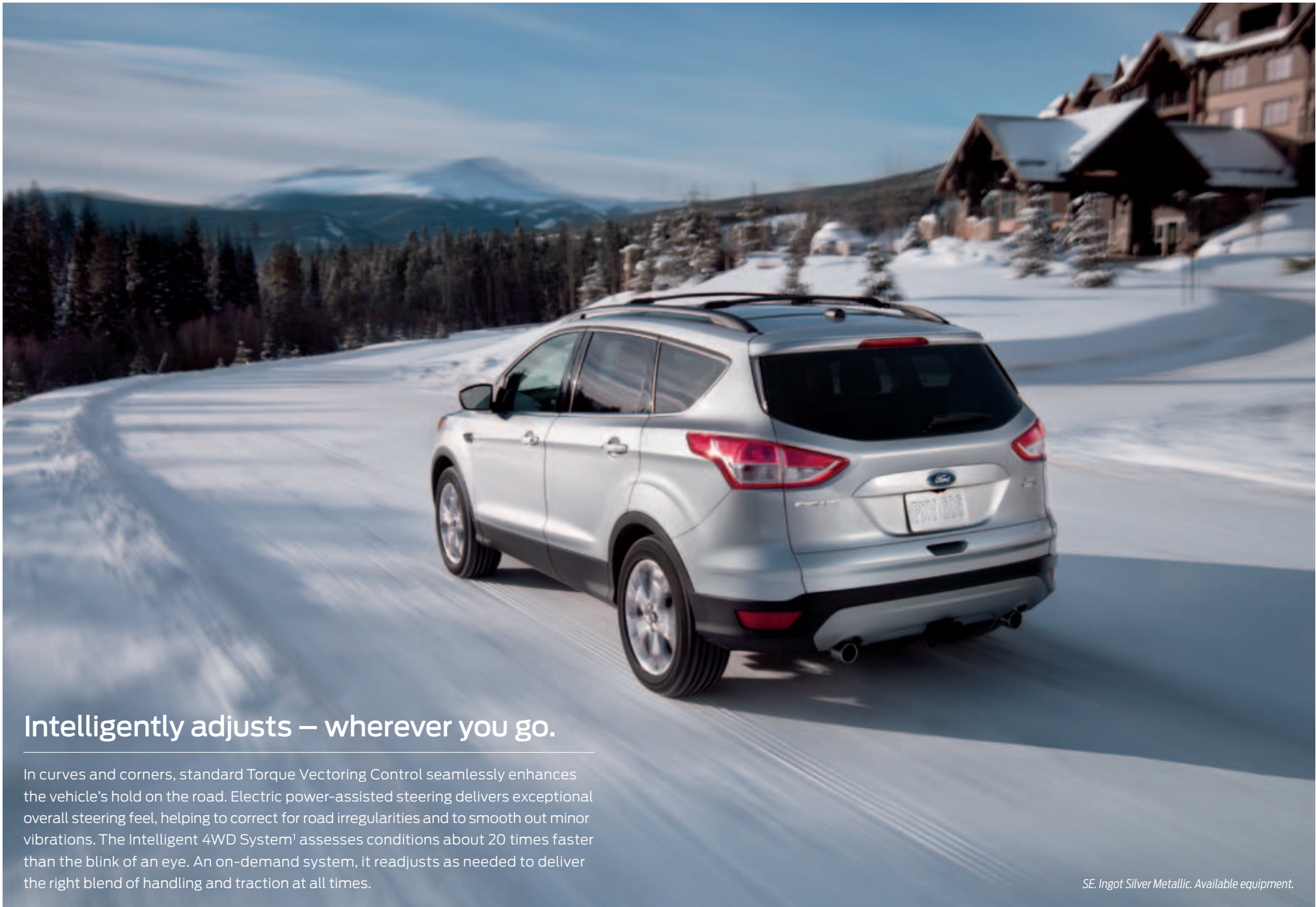


Responds to your touch.

Via the 8" color LCD touch screen of SYNC^{®1} with MyFord Touch.^{®1} Incoming text? Let the system read it aloud from your paired phone. It even translates common emoticons and abbreviations, like :-) and LOL. SiriusXM Satellite Radio² includes a 6-month trial subscription that brings you over 130 channels including commercial-free music, sports, news, talk, comedy and entertainment. Pair it with the voice-activated Navigation System,² which includes SiriusXM Traffic and Travel Link as part of the trial, and you'll have the ability to look up fuel prices, check local and national weather, and get detailed information on traffic speed, accidents, construction and road closings.



¹Available feature. Driving while distracted can result in loss of vehicle control. Only use SYNC/MyFord Touch/other devices, even with voice commands, when it is safe to do so. Some features may be locked out while the vehicle is in gear. Not all features are compatible with all phones. ²Available feature.



Intelligently adjusts – wherever you go.

In curves and corners, standard Torque Vectoring Control seamlessly enhances the vehicle's hold on the road. Electric power-assisted steering delivers exceptional overall steering feel, helping to correct for road irregularities and to smooth out minor vibrations. The Intelligent 4WD System¹ assesses conditions about 20 times faster than the blink of an eye. An on-demand system, it readjusts as needed to deliver the right blend of handling and traction at all times.

SE. Ingot Silver Metallic. Available equipment.

¹Available feature.

Boosts your confidence.

With the ability to bring along more fun gear. Equipped with the top-of-the-line 2.0L EcoBoost® I-4 engine¹ and the Class II Trailer Tow Prep Package, Escape is ready to tow up to 3,500 lbs.² And so are you. After all, you'll have trailer sway control¹ (TSC) monitoring the motions of your vehicle to detect trailer sway. If needed, TSC can reduce engine speed and selectively apply the brakes to help you maintain control of both the vehicle and the trailer.³ Play smarter in the 2014 Escape.



270 LB.-FT.⁴

240 HP⁴

3,500 LBS.



MAX. TOWING²

CONTROLS



SWAY¹

*Titanium. Deep Impact Blue Metallic.
Available equipment.*

¹Available feature. ²When properly equipped. ³Remember that even advanced technology cannot overcome the laws of physics. It's always possible to lose control of a vehicle due to inappropriate driver input for the conditions. ⁴Figures achieved using 93-octane premium unleaded fuel.

Assists in many ways.

Like taking the work out of parallel parking. First, active park assist¹ finds a spot, then it steers Escape into place as you control the gear shifter, and the brake and accelerator pedals. BLIS[®] (Blind Spot Information System) with cross-traffic alert¹ uses a light embedded in each sideview mirror² to warn of traffic detected in blind spots as you're driving forward, or traffic nearing either side of the vehicle as you're slowly backing up. Whenever you shift into Reverse, the standard rear view camera also displays the scene behind your vehicle on a full-color screen³ in front of you.

For your convenience, active park assist and BLIS with cross-traffic alert are included in the Titanium Technology Package, along with high-intensity discharge (HID) headlamps, rain-sensing windshield wipers, and a Forward Sensing System.



Driver-assist features are supplemental and do not replace the driver's judgment.
¹Available feature. ²BLIS replaces standard integrated blind spot mirrors. ³Available SYNC[®] with MyFord Touch[®] screen shown.




Proactively protects.

With Curve Control, which is part of our AdvanceTrac® with RSC® (Roll Stability Control™), standard on every 2014 Escape. If it senses you're taking a curve too quickly, Curve Control helps reduce the vehicle's speed by up to 10 mph in approximately 1 second.¹ Effective on dry or wet pavement, it's expected to be particularly useful on highway ramps. Escape also comes equipped with 7 standard airbags. And the front-seat side airbags feature an adaptive tunnel vent that helps tailor them to occupant size. Personalized protection. Increased peace of mind.

2013 IIHS  TOP SAFETY PICK

DRIVER'S KNEE  AIRBAG

 CURVE CONTROL

SE. Sterling Gray Metallic. Available equipment.

¹Remember that even advanced technology cannot overcome the laws of physics. It's always possible to lose control of a vehicle due to inappropriate driver input for the conditions.



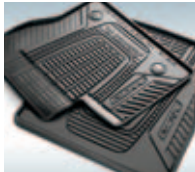
SE in Ingot Silver Metallic customized with roof crossbars and side rails, smoked side window deflectors, molded splash guards and roof-mounted bike carriers by THULE^{®1}

Remote start systems

All-weather floor mats

Cargo security shade and cargo area protector

Roof-mounted cargo box by THULE¹



Exterior	Interior	Electronics
Custom graphics ¹	Ash cup/coin holders	Bumper-mounted warning sensor systems ¹
Flat splash guards	Cargo organizers and protectors	Keyless entry keypad
Full vehicle covers ¹	Carpeted floor mats	Portable DVD rear-seat entertainment systems ¹
Hood protector ¹	Door sill plates	Vehicle Security System
Racks and carriers ¹	Interior light kit	
Sportz [®] tent ¹		
Trailer towing accessories		
Wheel lock kit		

Escape Specifications

Standard Features

Mechanical

- 6-speed SelectShift[®] automatic transmission with Sport Mode
- 4-wheel independent suspension
- Electric power-assisted steering
- Front and rear stabilizer bar
- Front-wheel drive (FWD)
- Mini spare wheel and tire
- Power disc brakes with Anti-Lock Brake System (ABS)
- Torque Vectoring Control

Seating

- Front bucket seats
- Front-passenger seat back map pocket
- 60/40 split-fold rear bench seat with tip-fold-flat latch

Interior

- 12-volt powerpoints (3)
- Adjustable driver and front-passenger sun visors with covered vanity mirrors
- Air conditioning with particulate air filter
- Cargo floor hooks (4)
- Coat hooks (2)
- Front (2) and rear (2) assist handles
- Front and rear carpeted floor mats
- Front and rear dome lights with front map lights and rear cargo area light

- Front-row center console with 2 cupholders, storage bin with removable tray, and armrest
- Illuminated Entry System
- Message center
- Overhead console with sunglasses holder
- Power door locks
- Power windows with one-touch-down driver's side window feature
- Rear-seat in-floor storage compartment
- Rear view camera
- Seat-side storage trays for driver and front passenger
- Steering wheel-mounted cruise and audio controls
- Tachometer
- Tilt/telescoping steering column
- Trip computer

Exterior

- Body-color front and rear fascias
- Body-color rear spoiler
- Easy Fuel[®] capless fuel filler
- Power sideview mirrors with integrated blind spot mirrors and manual fold-away design
- Rear-window defroster
- Solar-tinted glass
- Windshield wipers – Front: variable-intermittent with washer; rear: 2-speed with washer

Safety & Security

- Personal Safety System[™] for driver and front passenger includes dual-stage front airbags²; safety belt pretensioners, safety belt energy-management retractors, safety belt usage sensors, driver's seat position sensor, crash severity sensor, restraint control module and Front-Passenger Sensing System
- 3-point safety belt restraint system for all seating positions
- Adjustable head restraints at all 5 seating positions
- AdvanceTrac[®] with RSC[®] (Roll Stability Control[™]) and Curve Control
- Battery saver
- Belt-Minder[®] front safety belt reminder
- Child-safety rear door locks
- Driver's knee airbag²
- Front height-adjustable shoulder safety belts
- Front-seat side airbags²
- LATCH – Lower Anchors and Tether Anchors for Children (rear outboard seating positions)
- MyKey[®]
- Safety Canopy[®] System with side-curtain airbags² and rollover sensor
- SecuriLock[®] Passive Anti-Theft System
- SOS Post-Crash Alert System^{™3} unlocks doors, flashes hazard lights and sounds horn after airbag deployment or safety belt pretensioner activation in certain collisions
- Tire Pressure Monitoring System (excludes spare)

Engines/EPA-Estimated Ratings & Dimensions

2.5L Duratec[®] I-4

- 168 hp @ 6,000 rpm
- 170 lb.-ft. of torque @ 4,500 rpm (includes active grille shutters)
- 6-speed SelectShift automatic
- FWD 22 city/31 hwy/25 combined mpg

1.6L EcoBoost[®] I-4

- 178 hp @ 5,700 rpm⁴
- 184 lb.-ft. of torque @ 2,500 rpm⁴ (includes active grille shutters)
- 6-speed SelectShift automatic
- FWD 23 city/32 hwy/26 combined mpg
- 4WD 22 city/30 hwy/25 combined mpg

2.0L EcoBoost I-4

- 240 hp @ 5,500 rpm⁴
- 270 lb.-ft. of torque @ 3,000 rpm⁴
- 6-speed SelectShift automatic
- FWD 22 city/30 hwy/25 combined mpg
- 4WD 21 city/28 hwy/24 combined mpg

Exterior

Wheelbase	105.9"
Length	178.1"
Height	66.3"
Width – Excluding mirrors	72.4"
Width – Including mirrors	81.8"
Width – Mirrors folded	75.0"
Liftover height	27.8"

Interior

	Front/Rear
Head room	39.9"/39.0"
Shoulder room	56.0"/55.3"
Hip room	54.8"/52.4"
Leg room	43.1" (max.)/36.8"

Capacities (cu. ft.)

Passenger volume	98.1
Cargo volume behind front seats	67.8
Cargo volume behind rear seats	34.3

Fuel Tank (gal.)

FWD	15.1
4WD	15.1



accessories.ford.com

¹Ford Licensed Accessory.

²Always wear your safety belt and secure children in the rear seat. ³SOS hardware may become damaged or the battery may lose power in a crash, which could prevent operation. Not all crashes will activate an airbag or safety belt pretensioner. ⁴Figures achieved using 93-octane premium unleaded fuel.

14ESCAPE
ford.com





S

Equipment Group 100A
Includes all standard features, plus:

Mechanical

2.5L Duratec® I-4 engine
(includes active grille shutters)

Seating

6-way manual driver's seat and 4-way manual front-passenger seat

Cloth seats

Interior

AM/FM stereo/single-CD player with MP3 capability and 6 speakers

Cupholders (6)

Day/night rearview mirror

SYNC® with MyFord® voice-activated, in-vehicle connectivity system which includes 4.2" color LCD displays in instrument cluster and center stack; media hub with auxiliary audio input jack and USB port; and steering wheel-mounted 5-way controls (2)

Exterior

17" steel wheels with Sparkle Silver-painted wheel covers and P235/55R17 all-season BSW tires

Black door handles, upper and lower grilles and sideview mirrors

Quad-beam halogen headlamps

Remote Keyless Entry System with integrated keyhead transmitter remotes (2)

Available Options

Cargo area protector

Front and rear all-weather floor mats

Remote Start System

Splash guards

SE

Equipment Group 200A
Includes select S features, plus:

Mechanical

1.6L EcoBoost® I-4 engine
(includes active grille shutters)

Seating

10-way power driver's seat

Driver's seat back map pocket

Rear seat with recline and center armrest

Unique cloth seats

Interior

Chrome finish on door handles

Compass and outside temperature display

Cupholders (8)

SiriusXM Satellite Radio with 6-month trial subscription

Exterior

17" Sparkle Silver-painted aluminum wheels

Automatic headlamps

Black upper grille with chrome bar

Body-color door handles and sideview mirror caps

Chrome beltline moldings

Dual chrome exhaust tips

Fog lamps

Privacy glass (rear doors, rear quarter windows and liftgate window)

SecuriCode™ invisible keypad

Silver skid plates

Available Equipment Group

Equipment Group 201A – Convenience Package includes SYNC with MyFord Touch® (4.2" configurable display in instrument cluster; 8" LCD touch screen in center stack; and media hub with 2 USB ports, SD card reader and audio/video input jacks), dual-zone electronic automatic temperature control, 9 speakers, 110-volt power outlet, black roof-rack side rails, Reverse Sensing System, and perimeter alarm

Available Options & Packages

2.0L EcoBoost I-4 engine

18" chrome alloy finish wheels with P235/50R18 all-season BSW tires (requires 201A)

Black roof-rail crossbars (requires 201A)

Cargo area protector

Class II Trailer Tow Prep Package includes trailer sway control (2.0L EcoBoost only)

Front and rear all-weather floor mats

Intelligent 4WD System

Leather Comfort Package includes leather-trimmed seats, heated front seats, power windows with one-touch-up/-down feature, heated sideview mirrors, illuminated visor vanity mirrors, and leather-wrapped steering wheel and shift knob (requires 201A; late availability)

Power liftgate (requires 201A)

Power panoramic Vista Roof®

Navigation System with SYNC Services¹ and integrated SiriusXM Traffic and Travel Link with 6-month trial subscription (requires 201A)

Remote Start System

Splash guards

Tonneau cover

SE. Medium Light Stone cloth trim.

SE. 60/40 split-fold rear seat with reclining seat backs.

Overhead console with sunglasses holder.

Class-exclusive MyKey.®



17" Steel with Sparkle Silver-Painted Wheel Covers
Standard: **S**



17" Sparkle Silver-Painted Aluminum
Standard: **SE**



18" Chrome Alloy Finish
Available: **SE**

¹SYNC Services varies by trim level and model year and may require a subscription. Traffic alerts and turn-by-turn directions available in select markets. Message and data rates may apply. Ford Motor Company reserves the right to change or discontinue this product service at any time without prior notification or incurring any future obligation.

Titanium

Equipment Group 400A

Includes select SE features, plus:

Mechanical

Intelligent Access with push-button start

Perimeter alarm

Remote Start System

Seating

10-way power driver's seat with memory feature

Heated front bucket seats

Leather-trimmed seats

Interior

110-volt power outlet

Ambient lighting

Audio System from Sony® with 10 speakers and HD Radio™ Technology

Auto-dimming rearview mirror

Dual-zone electronic automatic temperature control

High-gloss Black finish on center stack and window switch bezels

Illuminated visor vanity mirrors

Leather-wrapped steering wheel and shift knob

Power windows with one-touch-up/-down feature SYNC® with MyFord Touch® which includes SYNC Services¹; 4.2" configurable display in instrument cluster; 8" LCD touch screen in center stack; and media hub with 2 USB ports, SD card reader and audio/video input jacks

Universal garage door opener

Exterior

18" Sparkle Nickel-painted aluminum wheels with P235/50R18 all-season BSW tires

Body-color, heated sideview mirrors with turn signal indicators, security approach lamps and driver's side memory

Chrome liftgate garnish

Gloss Black lower grille

Gloss Black upper grille with chrome surround

Hands-free liftgate

Reverse Sensing System

Silver roof-rack side rails

Available Equipment Group

Equipment Group 401A – Titanium Technology Package

includes Bi-Xenon high-intensity discharge (HID) headlamps with signature lighting, BLIS® (Blind Spot Information System) with cross-traffic alert, rain-sensing windshield wipers, active park assist and Forward Sensing System

Available Options & Package

2.0L EcoBoost® I-4 engine

19" Luster Nickel-painted aluminum wheels with P235/45R19 all-season BSW tires

Black roof-rail crossbars

Cargo area protector

Class II Trailer Tow Prep Package includes trailer sway control (2.0L EcoBoost only; power liftgate replaces hands-free liftgate)

Front and rear all-weather floor mats

Intelligent 4WD System

Power panoramic Vista Roof®

Splash guards

Tonneau cover

Voice-activated Navigation System with integrated SiriusXM Traffic and Travel Link with 6-month trial subscription



White Platinum Metallic Tri-coat. 19" Luster Nickel-painted aluminum wheels.² Available equipment.

Charcoal Black leather trim. Ambient lighting. Available equipment.

Leather-wrapped shift knob. Dual-zone electronic automatic temperature control.

110-volt power outlet.

High-intensity discharge (HID) headlamps.²



18" Sparkle Nickel-Painted Aluminum
Standard



19" Luster Nickel-Painted Aluminum
Optional

¹SYNC Services varies by trim level and model year and may require a subscription. Traffic alerts and turn-by-turn directions available in select markets. Message and data rates may apply. Ford Motor Company reserves the right to change or discontinue this product service at any time without prior notification or incurring any future obligation. ²Available feature.

Exteriors



White Platinum Metallic Tri-coat



Oxford White



Ingot Silver Metallic



Sterling Gray Metallic



Ginger Ale Metallic



Ruby Red Metallic Tinted Clearcoat



Sunset Metallic



Deep Impact Blue Metallic

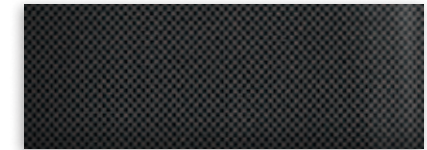


Tuxedo Black Metallic

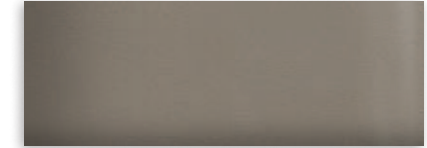
Interiors



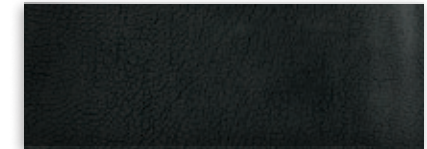
1 Medium Light Stone Cloth



2 Charcoal Black Cloth



3 Medium Light Stone Leather



4 Charcoal Black Leather

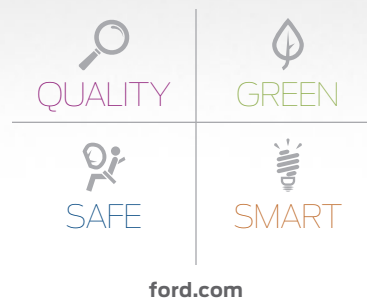
Exteriors	S	Interiors				Titanium	
		SE	3	4	3	4	
White Platinum Metallic Tri-coat ¹		1	2	3	4	3	4
Oxford White	2	1	2	3	4		
Ingot Silver Metallic	2	1	2	3	4	3	4
Sterling Gray Metallic	2	1	2	3	4	3	4
Ginger Ale Metallic	2	1	2	3	4	3	4
Ruby Red Metallic Tinted Clearcoat ¹		1	2	3	4	3	4
Sunset Metallic	2	1	2	3	4	3	4
Deep Impact Blue Metallic	2	1	2	3	4	3	4
Tuxedo Black Metallic	2	1	2	3	4	3	4

3, 4 Leather Comfort Package (late availability) on SE

¹Additional charge.
Colors are representative only.
See your dealer for actual paint/trim options.

14ESCAPE
ford.com





New Vehicle Limited Warranty. We want your Ford Escape ownership experience to be the best it can be. Under this warranty, your new vehicle comes with 3-year/36,000-mile bumper-to-bumper coverage, 5-year/60,000-mile Powertrain Warranty coverage, 5-year/60,000-mile safety restraint coverage, and 5-year/unlimited-mile corrosion (perforation) coverage – all with no deductible. Please ask your Ford Dealer for a copy of this limited warranty. □ **Roadside Assistance.** Covers your vehicle for 5 years or 60,000 miles, so you have the security of knowing that help may be only a phone call away should you run out of fuel, lock yourself out of the vehicle or need towing. Your Ford Dealer can provide complete details on all of these advantages. □ **Ford Credit.** Get the ride you want. Whether you plan to lease or finance, you'll find the choices that are right for you at Ford Credit. Ask your Ford Dealer for details or check us out at fordcredit.com. □ **Ford Extended Service Plan.** For a purchase or lease, the Ford Extended Service Plan (ESP) gives you "Peace-of-Mind" protection designed to cover key vehicle components and protect you from the cost of unexpected repairs. Ask your dealer for a Ford ESP, the only service contract backed exclusively by Ford and honored at all Ford Lincoln dealerships. □ **Insurance Services.** Get Ford Motor Company quality in your auto insurance. Our program offers industry-leading benefits and competitive rates. Call 1-877-367-3847, or visit us at fordvip.com for a no-obligation quote. Insurance offered by American Road Services Company (in CA, American Road Insurance Agency), a licensed agency and subsidiary of Ford Motor Company. □ **Genuine Ford Accessories** will be warranted for whichever provides you the greatest benefit: 12 months or 12,000 miles (whichever occurs first), or the remainder of your Bumper-to-Bumper 3-year/36,000-mile New Vehicle Limited Warranty. Ford Licensed Accessories (FLA) are warranted by the accessory manufacturer's warranty. FLA are fully designed and developed by the accessory manufacturer and have not been designed or tested to Ford Motor Company engineering requirements. Contact your Ford Dealer for details and/or a copy of all limited warranties.

Comparisons based on 2013/2014 competitive models (class is Small Utilities), publicly available information and Ford certification data at time of release. Some features discussed may be optional. Vehicles shown may contain optional equipment. Features shown may be offered only in combination with other options or subject to additional ordering requirements or limitations. Dimensions shown may vary due to optional features and/or production variability. Following release of the PDF, certain changes in standard equipment, options and the like, or product delays may have occurred which would not be included in these pages. Your Ford Dealer is the best source for up-to-date information. Ford Division reserves the right to change product specifications at any time without incurring obligations. □ HD Radio is a proprietary trademark of iBiquity Digital Corp. □ iHeartAuto is a trademark owned by Clear Channel Broadcasting, Inc. All third party uses are authorized under license. □ iPod is a trademark of Apple Inc., registered in the U.S. and other countries. □ Major League Baseball trademarks and copyrights are used with permission of MLB Advanced Media, L.P. All rights reserved. □ Microsoft is a registered trademark of Microsoft Corporation. □ PANDORA, the PANDORA logo, and the Pandora trade dress are trademarks or registered trademarks of Pandora Media, Inc. Used with permission. □ SiriusXM Satellite Radio, SiriusXM Traffic and Travel Link subscriptions sold separately or as a package after trial period. See SiriusXM Customer Agreement for complete terms at siriusxm.com. Fees and programming subject to change. Sirius satellite service is available only to those at least 18 years of age in the 48 contiguous USA, DC, and Puerto Rico (with coverage limitations). Sirius, XM and all related marks and logos are trademarks of Sirius XM Radio Inc. □ Sony is a registered trademark of the Sony Corporation. □ The Bluetooth word mark is a trademark of the Bluetooth SIG, Inc. □ THULE is a registered trademark of Thule Sweden AB.

Follow Ford:



facebook.com/fordescape



twitter.com/FordEscape



youtube.com/fordescape



gplus.to/FordMotorCompany